

# Split core current transformer



Model : SCT019

**Characteristic:**

Opening size 19mmx19mm, Compatible to foreign products,  
Epoxy encapsulated, leading wire output (1m) .



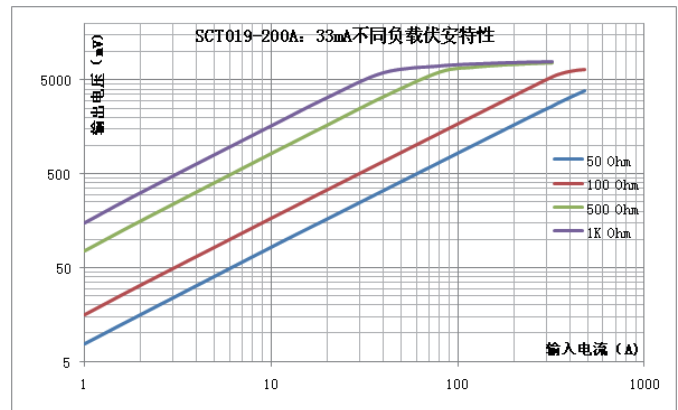
**Technical indicators:**

- Material of core: permalloy
- Fire resistance property:UL94-V0
- Work voltage:660V
- Work temperature:-25°C ~+70°C
- Storage temperature:-40°C ~+85°C
- Frequency range:20Hz~1KHz
- Dielectric strength: 3.5KV 50Hz 1min

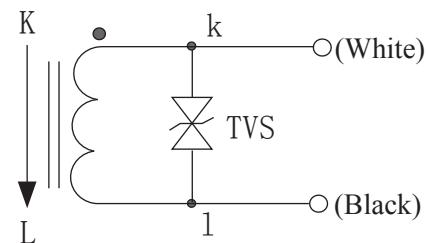
**Electric parameter:**

Rated input(rms)	200	A
Max. Input	300	A
Rated output	33	mA
Turns ratio		
Accuracy	±0.5	%
Linearity	≤0.2	%
Phase error		
max:Sampling resistance	20	Ω
Weight	91	g

**Characteristic curve in different load volt-ampere:**

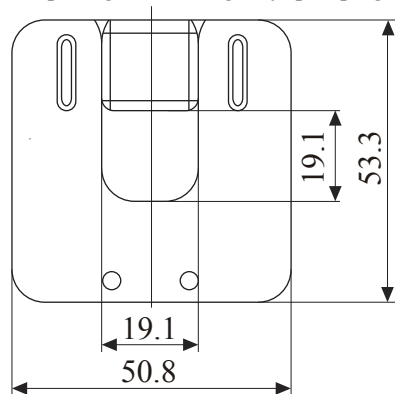


**Wiring diagram:**

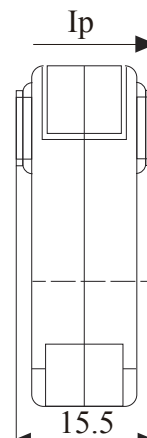


**Outline size diagram(in mm):**

Core opening and closing way: pull plug type



Front view



Side view

Built-in two-way protection diode, current output type