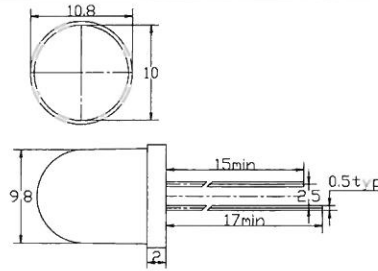


Features

- Lighting color :White
- Lens Type Water Clear
- Device Outline $\Phi 5\text{mm}$ Round Type



Absolute Maximim Ratings

$T_a = 25$

Series	Symbol	Testing Condition	Characteristics		Unit
			Max.	Min.	
Power Dissipation	P_d	—	100	—	mW
Reverse Voltage	V_R	$I_R = 50\mu\text{A}$	—	7	V
Peak Forward Current	I_{peak}	Duty=0.1 1kHz	80	—	mA
Derating Linear	I/C	—	0.25	—	mA/°
Operating Temperature Range	T_{opr}	—	+75	-25	°
Storage Temperature Range	T_{str}	—	+100	-40	°
Lead Soldering Temperature	T_{sol}	260° for 5sec. 3.0mm from resin			

Electro-Optical Characteristics

$T_a = 25$

Series	Symbol	Testing Condition	Characteristics			Unit
			Max.	Typ.	Min.	
Forward Voltage	V_F	$I_F = 20\text{mA}$	3.8	3.5	—	V
Reverse Current	I_R	$V_R = 7\text{V}$	50	—	—	μA
Peak Emission Wavelength	λ_p	$I_F = 20\text{mA}$	—	6000K	—	nm
Spectrum Width of Half Value	$\Delta\lambda$	$I_F = 20\text{mA}$	—	20	—	nm
Luminous Intensity Angle	$2\phi_{1/2}$	$I_F = 20\text{mA}$	—	18	15	°
Luminous Intensity	I_v	$I_F = 20\text{mA}$	—	10000	—	mcd

Remarks Luminous Intensity is measured by JF- tester of KELI