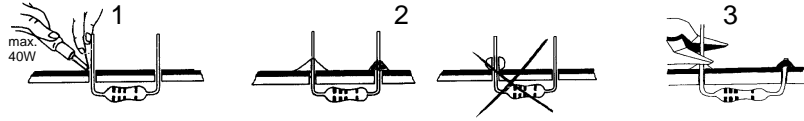


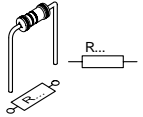
Soldering - Solderen - Soudage - Lötén - Soldadura - Lödning - Juottaminen - Saldatura - Solda



START

1

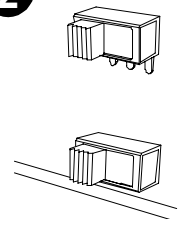
Resistor - Weerstand - Résistance - Widerstand - Resistencia - Motstand - Vastus - Resistenze



|                |   |
|----------------|---|
| ◇ R1...R4 : 1K | (Brown, Black, Red) -(Bruin, Zwart, Rood) -(Brun, Noir, Rouge) -(Braun, Schwarz, Rot) -(Brun, Svart, Röd) -(Ruskea, Musta, Punainen) -(Marrón, Negro, Rojo) -(Castanho, Preto, Encarnado) -(Marrone, Nero, Rosso)         |
| ◇ R5 : 100K    | (Brown, Black, Yellow) -(Bruin, zwart, Geel) -(Brun, noir, Jaune) -(Braun, Schwarz, Gelb) -(Brun, Svart, Gul) -(Ruskea, Musta, Keltainen) -(Marrón, Negro, Amarillo) -(Castanho, Preto, Amarelo) -(Marrone, Nero, Giallo) |
| ◇ R6 : 2K2     | (Red, Red, Red) -(Rood, Rood, Rood) -(Rouge, Rouge, Rouge) -(Rot, Rot, Rot) -(Röd, Röd, Röd) -(Punainen, Punainen, Punainen) -(Rojo, Rojo, Rojo) -(Encarnado, Encarnado, Encarnado) -(Rosso, Rosso, Rosso)                |
| ◇ R7 : 22      | (Red, Red, Black) -(Rood, Rood, zwart) -(Rouge, Rouge, noir) -(Rot, Rot, Schwarz) -(Röd, Röd, Svart) -(Punainen, Punainen, Musta) -(Rojo, Rojo, Negro) -(Encarnado, Encarnado, Preto) -(Rosso, Rosso, Nero)               |

2

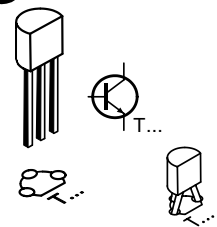
SWITCH



- ◇ SW1 : ON/OFF
- ◇ SW2 : SLOW / FAST

3

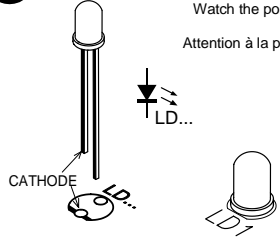
TRANSISTORS



- ◇ T1...T3 : BC547

4

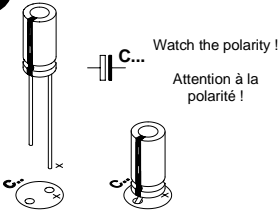
LED



- ◇ LD1, LD2 : white

5

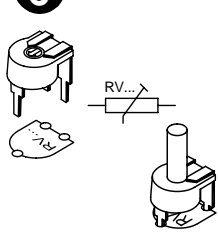
ELECTROLYTIC CAPACITORS



- ◇ C1 : 100µF
- ◇ C2 : 10µF

6

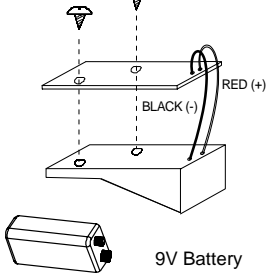
TRIMMER



- ◇ RV1 : 100K

7

BATTERY HOLDER



- 9V Battery

DIAGRAM

