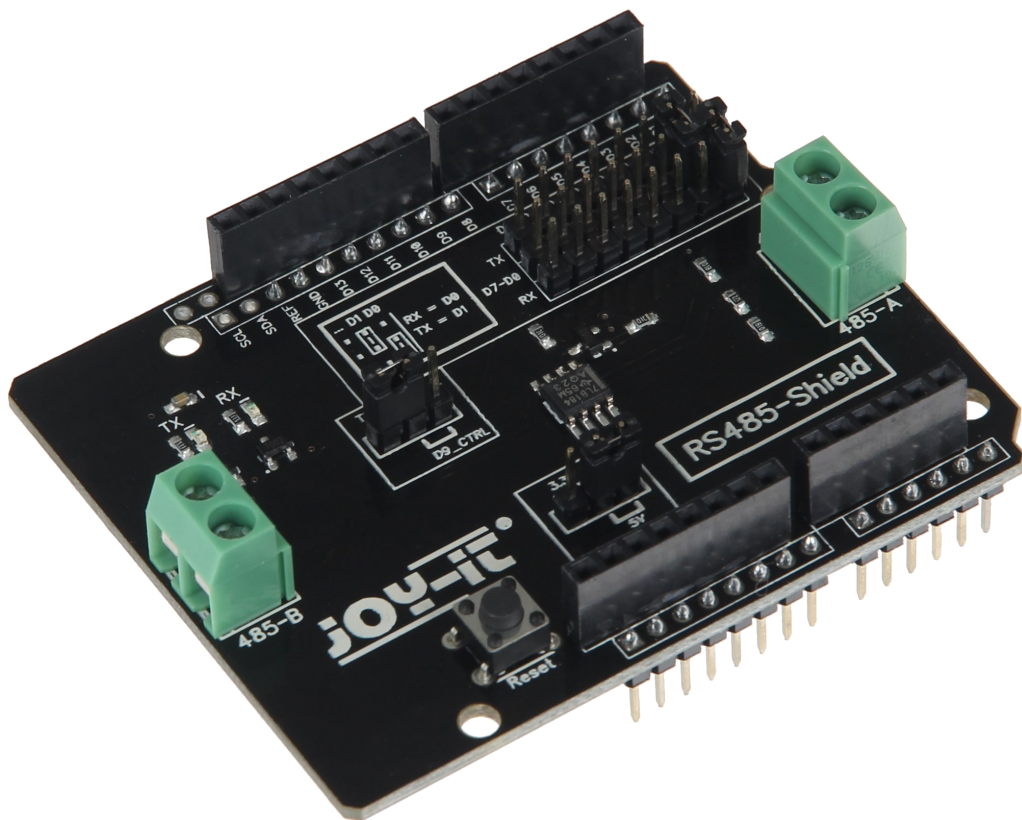


JOY-IT

RS485-Shield



Index

1. Technical specification
2. Installation
3. Usage
4. Security informations

Dear customer,
thank you for purchasing our product. Please find our instructions below.

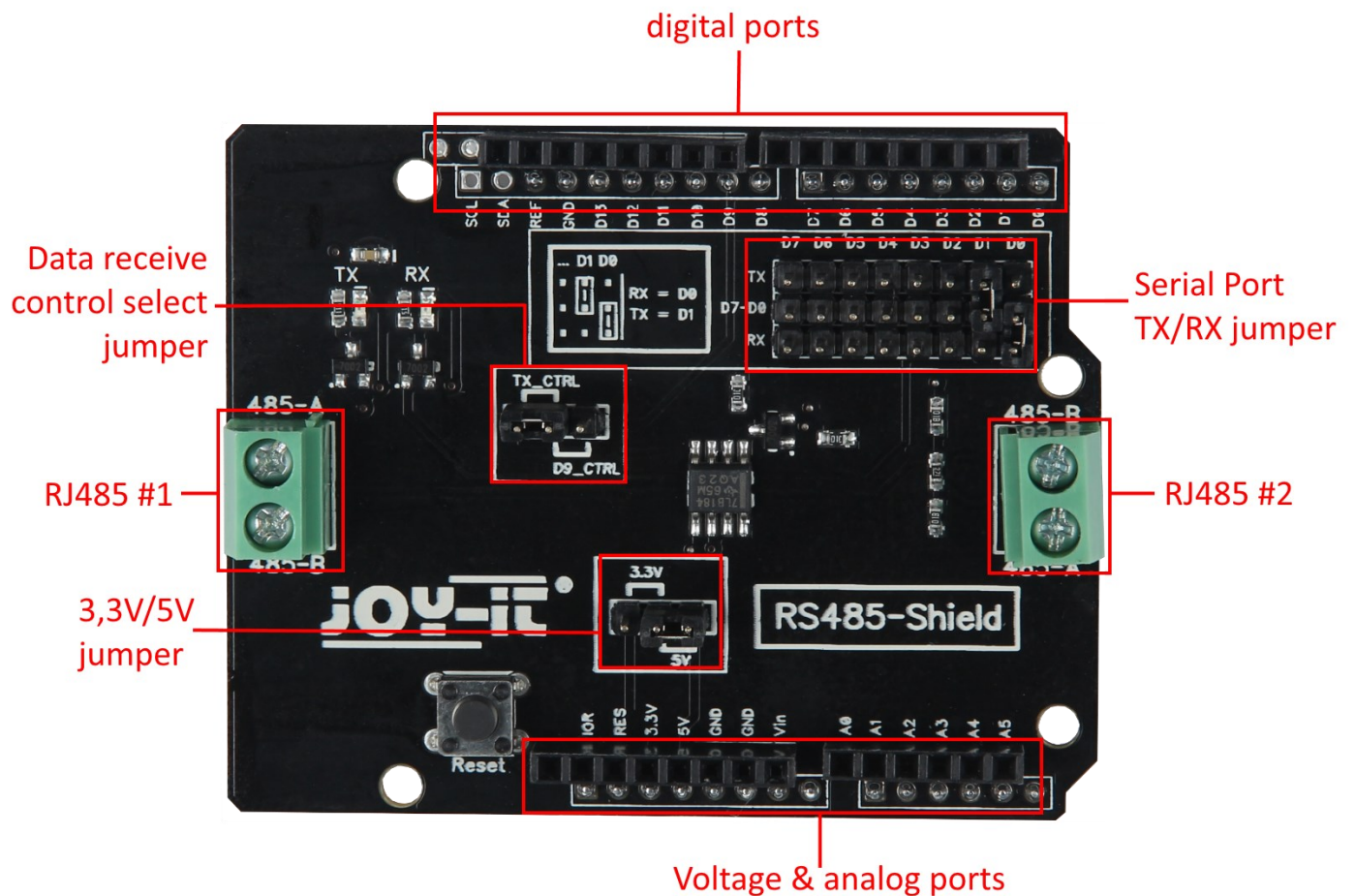
1. Technical specification

The RS485-Shield can, by simply attaching it, extend your Arduino by an RS485 interface. Normally, an Arduino is only equipped with an USB Port and a TTL UART interface. With this shield, you can connect devices with a RJ485 connection.

2. Installation

Connect the shield to your Arduino. The shield is ready to use
With the serial-port-jumper, you can use two ports (D0-D7) for serial usage.

3. Usage



4. Security informations

Please note our security informations:

This product is for usage in dry rooms only. It must not get wet or moist.

This is no toy and small parts can be swallowed and lead to death.

We can not ensure a perfect function by using third-party supplies.

The device can be damaged by higher voltage and could cause fire or lead to damage by an electric shock.