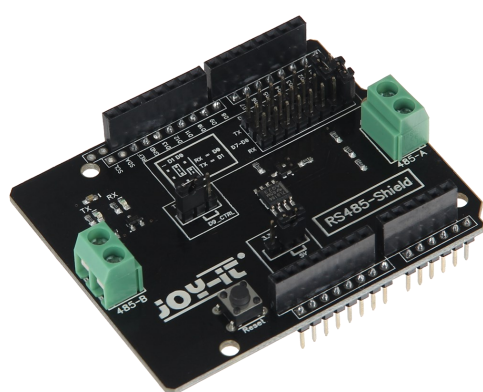


RS485 SHIELD

RS485 port expander for Arduino



Through attaching this shield to your Arduino, you can easily extend it with a serial RS485 interface. The RS485 port can be controlled via the UART interface of the Arduino.

MAIN FEATURES

Signal	UART to RS485
Ports	2x D0 - D7
Special features	Pin header is looped through
Further functions	Reset button
Jumper wires	Serial port jumper
Dimensions	69 x 56 mm
Items delivered	ARD-RS485, 2x Jumper

FURTHER DETAILS

Article No.	ARD-RS485
EAN:	4250236813295
Customs Tariff No.	8473302000