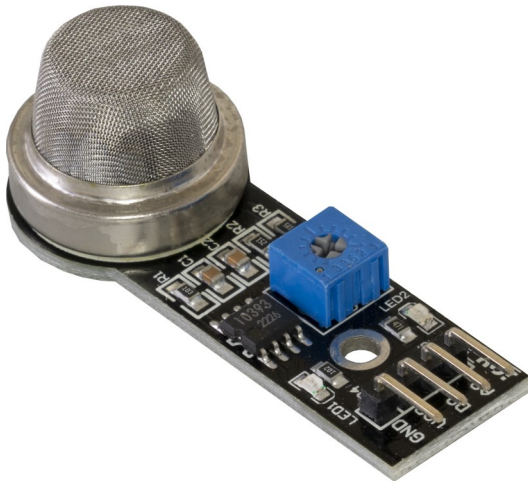


SEN-MQ2

Analog sensor for combustible gas and smoke on module



This analog gas sensor has a small heating part with an electronical chemical sensor. It is suitable for indoor usage. The sensor can output exact values only after warm-up phase.

Caution: sensor gets hot while usage!



MAIN FEATURES

Measurement range	100 - 10'000 ppm
Measurable substances	LPG, <i>i</i> -butan (C ₄ H ₁₀), propane (C ₃ H ₈), methane (CH ₄), hydrogen(O ₂), alcohol, smoke
Application areas	Detecting gas leaks, gas alarm, robotic, microcontroller projects
Compatible with	Raspberry Pi (with AD-converter), Arduino. etc.
Special features	High sensitivity which can be adjusted by potentiometer, quick response time, wide detection range
Dimensions	32 x 20 x 22 mm
Items delivered	SEN-MQ2

FURTHER SPECIFICATIONS

Analog Output	values will be processed by microcontroller
Digital Output	thresholds can be set
Pins:	
VCC	Voltage supply (5 V)
GND	Ground
AOUT	Analog output (0 V - 5 V)
DOUT	Digital output (0 V / 5 V)

FURTHER DETAILS

Article No.	SEN-MQ2
EAN:	4250236819938
Customs Tariff No.	90269000