

# DTOF LiDAR LD19 SPECIFICATION

---

Product Name : DTOF LiDAR\_LD19

---

Description : DTOF COAXIAL BRUSHLESS LiDAR with Raspberry pi SBC  
(based on Raspbian OS 32-bit kernel version 5.4)

---

Date : 2022-04-02

---

File No : LD-LD19-DS-REV\_2.9\_EN

---



## 目录

1.	DEVELOPMENT KIT.....	3
2.	INSTALL RASPBIAN OS ON SD CARD.....	4
	STEP1: Download a Raspbian OS.....	4
	STEP2: Flash Raspbian OS into SD card.....	5
3.	INSTALL ROS MELODIC ON RASPBIAN OS.....	6
	STEP1: Install Dependencies and Download ROS source packages.....	8
	STEP2(OPTIONAL): Solve the ERROR.....	8
	STEP3: Install Melodic Desktop.....	11
	STEP4: Fix the Issues.....	12
	STEP5: Build and Source the Installation.....	13
4.	START SERIAL ttyS0.....	14
5.	INSTALL LIDAR ROS PACKAGE.....	17
	STEP1: Device connection.....	17
	STEP2: ROS DTOF_LD19 Driver Compile.....	18
	STEP3: RVIZ results.....	20
6.	USE CAUTION.....	22
	Temperature.....	22
	Ambient lighting.....	22
	Power demand.....	22
7.	REVISION.....	23

# 1. DEVELOPMENT KIT

The development kit of DTOF LiDAR\_LD19 is an accessory tool (includes bracket & DTOF module & Uart cable & Assembly screws) provided for robotic device development or performance evaluation of sensor products, and for the educational purpose use of robotic device motion control and algorithm study, Users need to purchase a RPI SBC ( Raspberry PI3 A+/B+, Raspberry PI3 B, Raspberry PI 4B) to pair with DTOF module for use/development.



(a) TOFLiDAR\_LD19 (b) Uart cable (c) raspberry pi 4B /PI 3B/PI3 A+/Pi3 B+

FIG 1 TOFLiDAR\_LD19 DEVELOPMENT KIT

CHART 1 TOFLiDAR\_LD19 DEVELOPMENT KIT DESCRIPTION

Item	Qty	Description
TOFLiDAR_LD19	1	Detection product for space detection and obstacle recognition
Uart cable	1	Use for connection between the DTOF and Raspberry pi 4B for power and data transfer
Raspberry pi 4B/3B/3B+/3A+	1	As a computing tool for the TOF lidar data analysis and visualization into to display device

## 2. INSTALL RASPBIAN OS ON SD CARD

### STEP1: Download a Raspbian OS

To install Raspbian OS on a SD Card you will need to download a Raspbian OS firstly. User may download the Raspbian OS directly from the official website of raspberry foundation, Ldrobot TOF lidar user manual is based on the version of Raspberry Pi OS (32-bit) with desktop and recommended software as highlighted in the figure 2. <https://www.raspberrypi.org/downloads/raspbian-pi-os/> or <https://www.raspberrypi.com/software/operating-systems/>

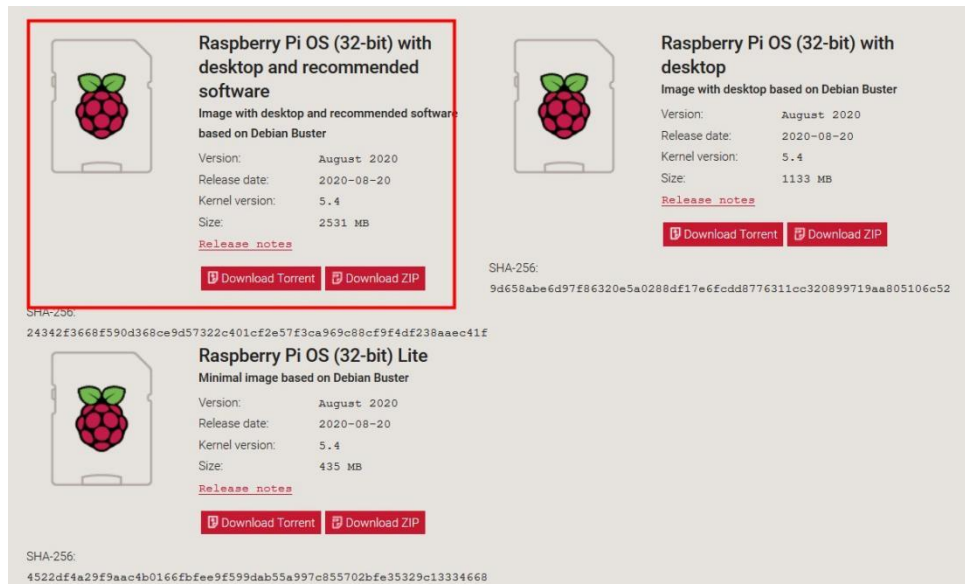


FIG 2. RASPBERRY OFFICIAL WEBSITE

Raspbian os download site of history version :

- Raspbian: <https://downloads.raspberrypi.org/raspbian/images/>
- Raspbian full: [https://downloads.raspberrypi.org/raspbian\\_full/images/](https://downloads.raspberrypi.org/raspbian_full/images/)
- Raspbian lite: [https://downloads.raspberrypi.org/raspbian\\_lite/images/](https://downloads.raspberrypi.org/raspbian_lite/images/)

## STEP2: Flash Raspbian OS into SD card

After downloading a Raspbian OS, you need to install win32diskimager as the tool to flash Raspbian OS into SD card. After the image file has been flashed into the SD card successfully, SD card will automatically display a boot partition.

<https://sourceforge.net/projects/win32diskimager/>

## 3. INSTALL ROS MELODIC ON RASPBIAN OS

Powering up the Raspberry Pi. And then insert the Micro SD card into the Pi SD-cage . Connects the Mini-HDMI cable to your display ,connect mouse and keyboard . Plug in the power cable to turn on the Raspberry Pi. Then modify the source file of Rasbian OS. Installation reference tutorial is

<http://wiki.ros.org/ROSBerryPi/Installing%20ROS%20Melodic%20on%20the%20Raspberry%20Pi>

- **If you are a Chinese user, please modify as follows:**

**\$ sudo nano /etc/apt/sources.list**

Block the existing modification as:

```
deb http://mirrors.ustc.edu.cn/raspbian/raspbian/ buster main contrib non-free rpi
```

**\$ sudo nano /etc/apt/sources.list.d/raspi.list**

Block the existing modification as:

```
deb https://mirrors.tuna.tsinghua.edu.cn/raspberrypi/ buster main ui
```

- **If you are a user outside of Chinese, please modify as follows:**

**\$ sudo nano /etc/apt/sources.list**

Block the existing modification as:

Install any source from the following URL: <https://www.raspbian.org/RaspbianMirrors>

Example:

[1]

```
deb http://mirror.nus.edu.sg/raspbian/raspbian/ buster main contrib non-free rpi
```

[2]

deb <http://ftp.jaist.ac.jp/raspbian/> buster main contrib non-free rpi

[3]

deb <http://mirror.ox.ac.uk/sites/archive.raspbian.org/archive/raspbian/> buster main contrib non-free rpi

[4]

deb <http://mirrors.ocf.berkeley.edu/raspbian/raspbian/> buster main contrib non-free rpi

[5]

deb <http://reflection.oss.ou.edu/raspbian/raspbian/> buster main contrib non-free rpi

[6]

deb <http://mirror.liquidtelecom.com/raspbian/raspbian/> buster main contrib non-free rpi

[7]

deb <http://mirrordirector.raspbian.org/raspbian/> buster main contrib non-free rpi

[8]

deb <https://archive.raspbian.org/raspbian/> buster main contrib non-free rpi

[9]

deb <https://mirrors.tuna.tsinghua.edu.cn/raspbian/raspbian/> buster main contrib non-free rpi

[10]

deb <http://mirrors.aliyun.com/raspbian/raspbian/> buster main contrib non-free rpi

[11]

deb <http://ftp.cse.yzu.edu.tw/Linux/raspbian/raspbian/> buster main contrib non-free rpi

## STEP1: Install Dependencies and Download ROS source packages

```
$ sudo sh -c 'echo "deb http://packages.ros.org/ros/ubuntu $(lsb_release -sc) main" >
/etc/apt/sources.list.d/ros-latest.list'

$ sudo apt-key adv --keyserver 'hkp://keyserver.ubuntu.com:80' --recv-key
C1CF6E31E6BADE8868B172B4F42ED6FBAB17C654

$ sudo apt-get update

$ sudo apt-get install -y python-rosdep python-rosinstall-generator python-wstool python-
rosinstall build-essential cmake
```

Then initialize rosdep and update it.

```
$ sudo rosdep init

$ rosdep update
```

## STEP2(OPTIONAL): Solve the ERROR:

ERROR : cannot download default sources list from:  
[https://raw.githubusercontent.com/ros/rosdistro/master/rosdep/sources.list.d/20-  
default.list](https://raw.githubusercontent.com/ros/rosdistro/master/rosdep/sources.list.d/20-default.list) Website may be down.

```
$ cd ~

$ git clone https://github.com/ros/rosdistro.git

if Cloning into 'rosdistro'...

fatal: unable to access 'https://github.com/ros/rosdistro.git/': Failed to connect to github.com port
```



443: Connection timed out

You can go to this link to download the source package(rosdistro-master.zip) of the master branch. this link is <https://github.com/ros/rosdistro>

```
$ mkdir ~/rosdistro
```

```
$ unzip rosdistro-master.zip -d ~/rosdistro
```

```
$ mv ~/rosdistro/rosdistro-master/* ~/rosdistro/
```

```
$ rm -rf ~/rosdistro/rosdistro-master
```

When the file is successfully cloned or downloaded, proceed as follows:

```
$ cd ~
```

***Step1:***

```
$ sudo nano ~/rosdistro/rosdep/sources.list.d/20-default.list
```

Modify the file as follows:

Note that 'pi' is the user name of the system, you can replace it with your own system user name

```
# os-specific listings first
```

```
#yaml https://raw.githubusercontent.com/ros/rosdistro/master/rosdep/osx-homebrew.yaml osx
```

```
yaml file:///home/pi/rosdistro/rosdep/osx-homebrew.yaml osx
```

```
# generic
```

```
#yaml https://raw.githubusercontent.com/ros/rosdistro/master/rosdep/base.yaml
```

```
#yaml https://raw.githubusercontent.com/ros/rosdistro/master/rosdep/python.yaml
```

```
#yaml https://raw.githubusercontent.com/ros/rosdistro/master/rosdep/ruby.yaml
```

```
#gbpdistro https://raw.githubusercontent.com/ros/rosdistro/master/releases/fuerte.yaml fuerte
```

```
yaml file:///home/pi/rosdistro/rosdep/base.yaml
```

```
yaml file:///home/pi/rosdistro/rosdep/python.yaml
```

```
yaml file:///home/pi/rosdistro/rosdep/ruby.yaml
```

```
gbpdistro file:///home/pi/rosdistro/releases/fuerte.yaml fuerte
```

### ***Step2:***

**\$ sudo nano /usr/lib/python2.7/dist-packages/rosdep2/sources\_list.py**

Modify the file as follows:

```
# default file to download with 'init' command in order to bootstrap

# rosdep

#DEFAULT_SOURCES_LIST_URL =
'https://raw.githubusercontent.com/ros/rosdistro/master/rosdep/sources.list.d/20-default.list'

DEFAULT_SOURCES_LIST_URL = 'file:///home/pi/rosdistro/rosdep/sources.list.d/20-
default.list'

# seconds to wait before aborting download of rosdep data

DOWNLOAD_TIMEOUT = 15.0
```

### ***Step3:***

**\$ sudo nano /usr/lib/python2.7/dist-packages/rosdep2/rep3.py**

Modify the file as follows:

```
# location of targets file for processing gbpdistro files

#REP3_TARGETS_URL =
'https://raw.githubusercontent.com/ros/rosdistro/master/releases/targets.yaml'

REP3_TARGETS_URL = 'file:///home/pi/rosdistro/releases/targets.yaml'

# seconds to wait before aborting download of gbpdistro data

DOWNLOAD_TIMEOUT = 15.0
```

### ***Step4:***

**\$ sudo nano /usr/lib/python2.7/dist-packages/rosdistro/\_init\_.py**

Modify the file as follows:

```
# same version as in:

# - setup.py

# - stdeb.cfg
```

```
__version__ = '0.8.3'  
  
# index information  
  
#DEFAULT_INDEX_URL = 'https://raw.githubusercontent.com/ros/rosdistro/master/index-v4.yaml'  
DEFAULT_INDEX_URL = 'file:///home/pi/rosdistro/index-v4.yaml'
```

Then reinitialize rosdep and update it

```
$ sudo rosdep init  
$ rosdep update
```

### STEP3: Install Melodic Desktop

You need to create a dedicated catkin workspace for building ROS and move to that directory.

```
$ mkdir ~/ros_catkin_ws  
$ cd ~/ros_catkin_ws  
$ rosinstall_generator desktop --rosdistro melodic --deps --wet-only --tar > melodic-desktop-wet.rosinstall  
$ wstool init -j8 src melodic-desktop-wet.rosinstall
```

The command will take a few minutes to download all of the core ROS packages into the src folder. If wstool init fails or is interrupted, you can resume the download by running (network access may affect the download of ROS source code,

because if you encounter download failures, please try multiple times):

```
$ wstool update -j4 -t src
```

## STEP4: Fix the Issues

Let's install the compatible version of Assimp (Open Asset Import Library) to fix collada\_urdf dependency problem.

```
$ mkdir -p ~/ros_catkin_ws/external_src
```

```
$ cd ~/ros_catkin_ws/external_src
```

- **If you're not using the latest version of the Raspbian OS Buster, then:**

```
$ wget http://sourceforge.net/projects/assimp/files/assimp-3.1/assimp-3.1.1_no_test_models.zip/download -O assimp-3.1.1_no_test_models.zip
```

```
$ unzip assimp-3.1.1_no_test_models.zip
```

```
$ cd assimp-3.1.1
```

```
$ cmake .
```

```
$ make
```

```
$ sudo make install
```

- **If you're using the latest version of the Raspbian OS Buster, then:**

```
$ wget https://github.com/assimp/assimp/archive/refs/tags/v5.0.1.zip
```

```
$ unzip -o v5.0.1.zip
```

```
$ cd assimp-5.0.1
```

```
$ cmake .
```

```
$ make
```

```
$ sudo make install
```

The user need to install OGRE for rviz ,too

```
$ sudo apt-get install libogre-1.9-dev
```

The next step is to use the rosdep tool for installing all the rest of the dependencies:

```
$ cd ~/ros_catkin_ws  
$ rosdep install -y --from-paths src --ignore-src --rosdistro melodic -r --os=debian:buster
```

## STEP5: Build and Source the Installation

Once it has completed downloading the packages and resolving the dependencies you are ready to build the catkin packages. If you're using raspberry Pi 3, you need to increase the swap size first. If you are using raspberry Pi 4, you can skip this step.

```
$ sudo mkdir /swap  
$ cd /swap  
$ sudo dd if=/dev/zero of=swapfile bs=1024 count=2000000  
$ sudo mkswap swapfile  
$ sudo swapon swapfile
```

Then build.

```
$ cd ~/ros_catkin_ws  
$ sudo ./src/catkin/bin/catkin_make_isolated --install -DCMAKE_BUILD_TYPE=Release --install-space /opt/ros/melodic -j2
```

Now ROS Melodic should be installed on your Raspberry Pi 4. We will source the new installation with following command:

```
$ echo "source /opt/ros/melodic/setup.bash" >> ~/.bashrc  
$ source ~/.bashrc
```

Try launching roscore to check if everything was successful.

```
$ roscore
```

## 4. START SERIAL ttyS0

```
$ sudo raspi-config
```

Open the system configuration interface as shown in the figure below, and select the **interface options**.

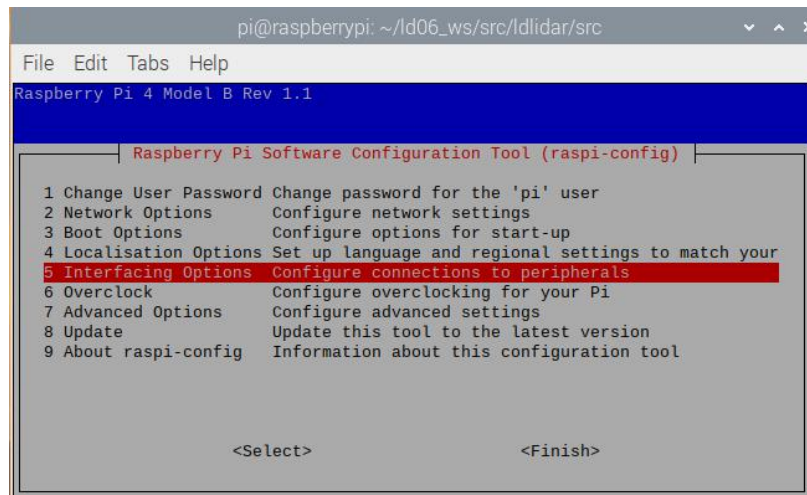


FIG 3. RASPBERRY SYSTEM CONFIGURATION I

Then select **P6 serial**.

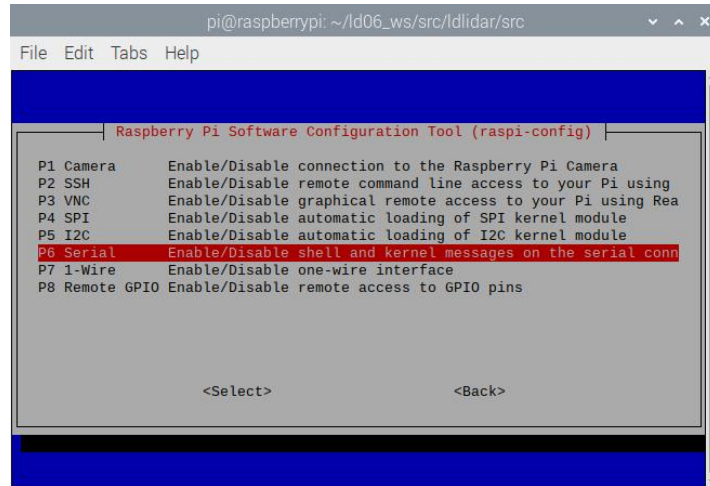


FIG 4. RASPBERRY SYSTEM CONFIGURATION II

Then click **Yes**.

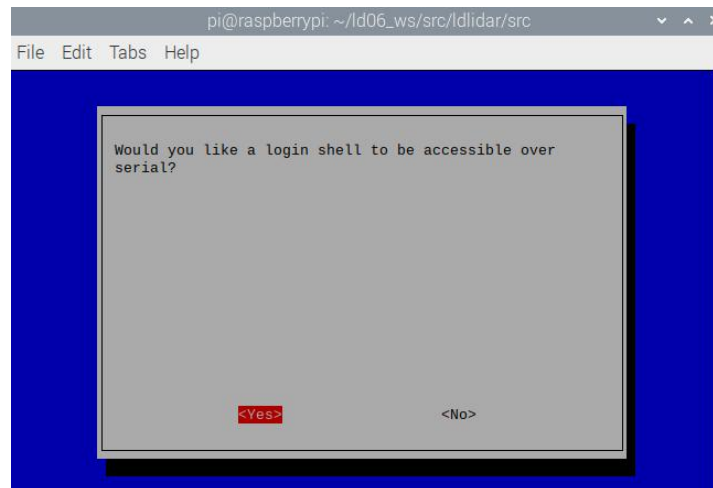


FIG 5. RASPBERRY SYSTEM CONFIGURATION III

Then Save and exit. Reboot raspberrypi. Please do not disconnect power during reboot. Otherwise, the serial configuration may not take effect.

```
$ reboot
```

Check if the serial port is open. View serial port mapping relationship

```
$ ls -l /dev
```

```
crw-rw---- 1 root video  241,  0 Jul  8 13:45 rpidvid-hevcmem
crw-rw---- 1 root video  240,  0 Jul  8 13:45 rpidvid-intcmem
crw-rw---- 1 root video  238,  0 Jul  8 13:45 rpidvid-vp9mem
lrwxrwxrwx 1 root root    5 Jul  8 13:45 serial0 -> ttyS0
lrwxrwxrwx 1 root root    7 Jul  8 13:45 serial1 -> ttyAMA0
drwxrwxrwt 2 root root   40 Feb 14  2019 shm
drwxr-xr-x 3 root root  140 Jul  8 13:45 snd
```

FIG 6. RASPBERRY SERIAL PORT MAPPING

Serial0 is the serial port corresponding to the GPIO pin. If you see serial0 connected to ttys0, the serial port configuration is successful.



## 5. INSTALL LIDAR ROS PACKAGE

### STEP1: Device connection

Connect Lidar and Raspberry Pi 4B as shown in the figure below. 5v connect 5v Power, GND connect Ground, Motor PWM connect BCM18(pwm0),Lidar Uart TX connect BCM15(RXD).

Our company's Lidar support internal speed control. If you want external speed control, you need to download and install the WiringPi library yourself, and configure the BCM18 pin as PWM0, output a 24KHz PWM signal, and implement PID speed control yourself.

WiringPi library installation method:

Then install wiringPi, WiringPi has updated to 2.52 for the Raspberry Pi 4B.

```
$ cd /tmp
$ wget https://project-downloads.drogon.net/wiringpi-latest.deb
$ sudo dpkg -i wiringpi-latest.deb
```

After wiringPi being updated ,you can check with the latest version update

```
$ gpio -v
```

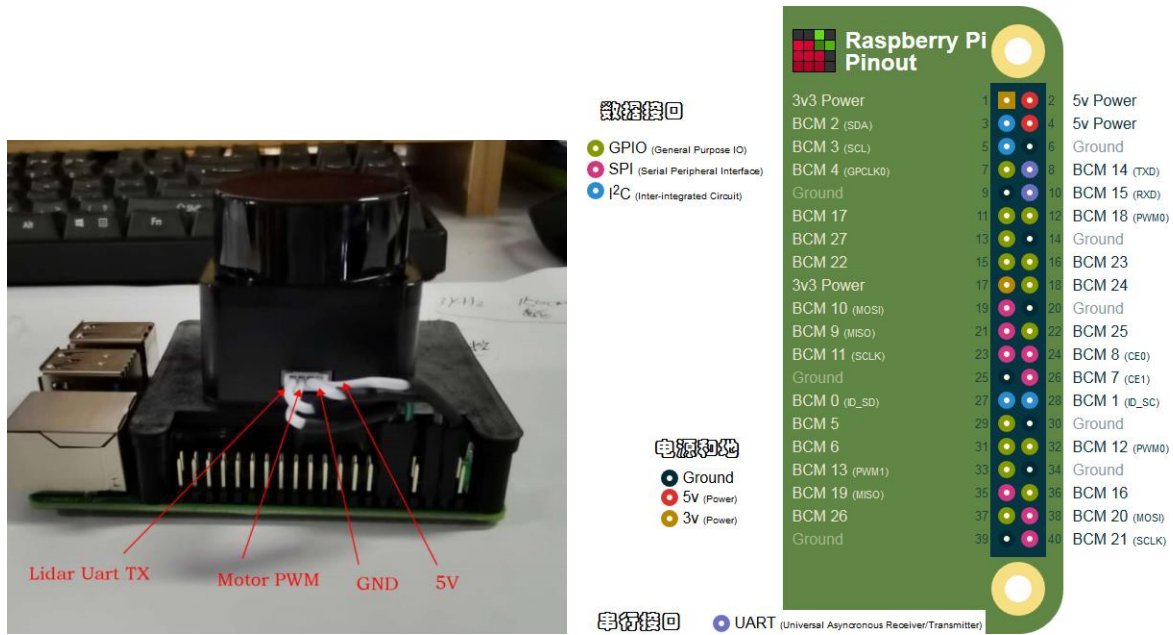


FIG 7. CONNECTION BETWEEN LIDAR AND RASPBERRY PI 4B

The users need to have the -x permission of raspbian kernel system. After connecting TOF LiDAR\_LD19 with raspberry pi 4B/3B/3B+/3A+.

```
$ sudo chmod 777 /dev/ttyS0
```

## STEP2: ROS DTOF\_LD19 Driver Compile

The source code of the ROS function package of this product is hosted on the warehouses of Github and Gitee. You can download the source code of the master or main branch by accessing the network link of the warehouse, or download it through the git tool.

1) Warehouse website address:

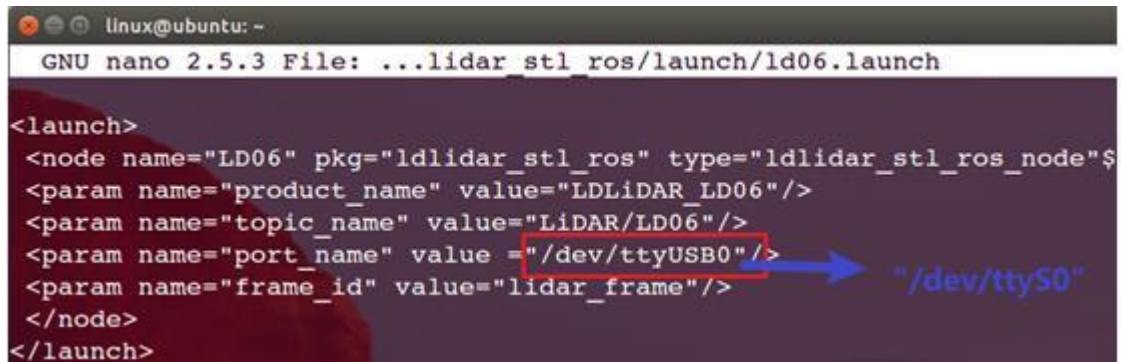
[https://github.com/DFRobotdl/lidlar\\_stl\\_ros](https://github.com/DFRobotdl/lidlar_stl_ros)

2) git download way:

```
$ cd ~  
$ mkdir -p ldlidar_ros_ws/src  
$ cd ~/ldlidar_ros_ws/src  
$ git clone https://github.com/DFRobotdl/ldlidar_stl_ros.git
```

- 3) Modify the `port_name` value in the `LD19.launch` file in the `~/ldlidar_ros_ws/src/ldlidar_stl_ros/launch/` directory to `/dev/ttyS0`

```
$ nano ~/ldlidar_ros_ws/src/ldlidar_stl_ros/launch/LD19.launch
```



```
linux@ubuntu: ~  
GNU nano 2.5.3 File: ...lidar_stl_ros/launch/ld06.launch  
  
<launch>  
  <node name="LD06" pkg="ldlidar_stl_ros" type="ldlidar_stl_ros_node"$  
  <param name="product_name" value="LDLiDAR_LD06"/>  
  <param name="topic_name" value="LiDAR/LD06"/>  
  <param name="port_name" value="/dev/ttyUSB0"/>  
  <param name="frame_id" value="lidar_frame"/>  
</node>  
</launch>
```

- 4) Build and Run

```
$ cd ~/ldlidar_ros_ws  
$ catkin_make  
$ source devel/setup.bash  
$ roslaunch ldlidar_stl_ros LD19.launch
```

## STEP3: RVIZ results

After running the launch file, you need to open a new terminal. Then run rviz to view the scan results, as shown in the following figure:

```
$ rosrn rviz rviz
```

You need to click the open config button. Then select the `~/ldlidar_ros_ws/src/ldlidar_stl_ros/rviz/ldlidar.rviz` file , After opening, Click on the topic of LaserScan and select `/LiDAR/LD19`.

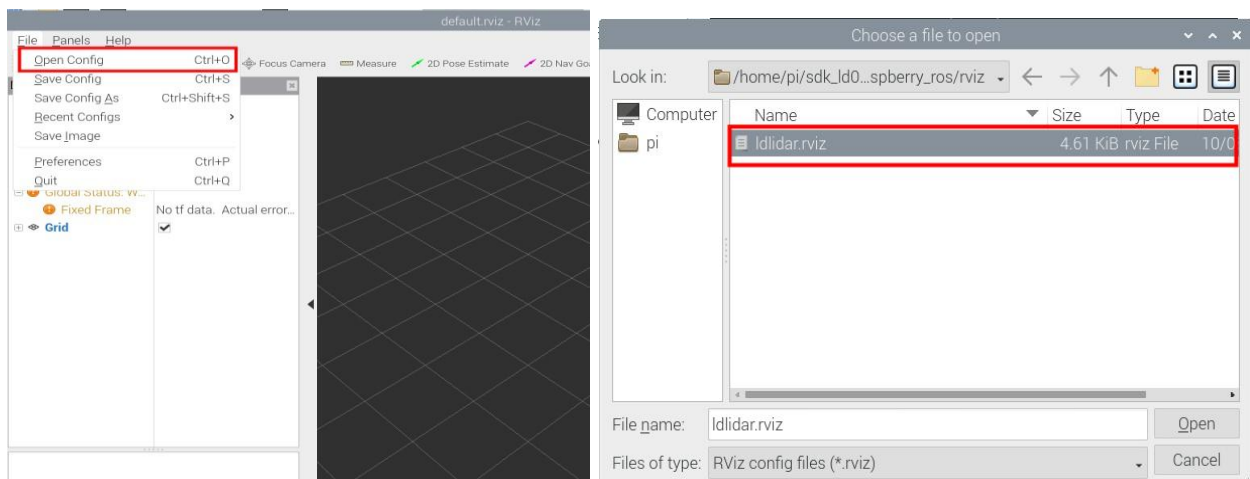


FIG 8 RVIZ CONFIGURATION

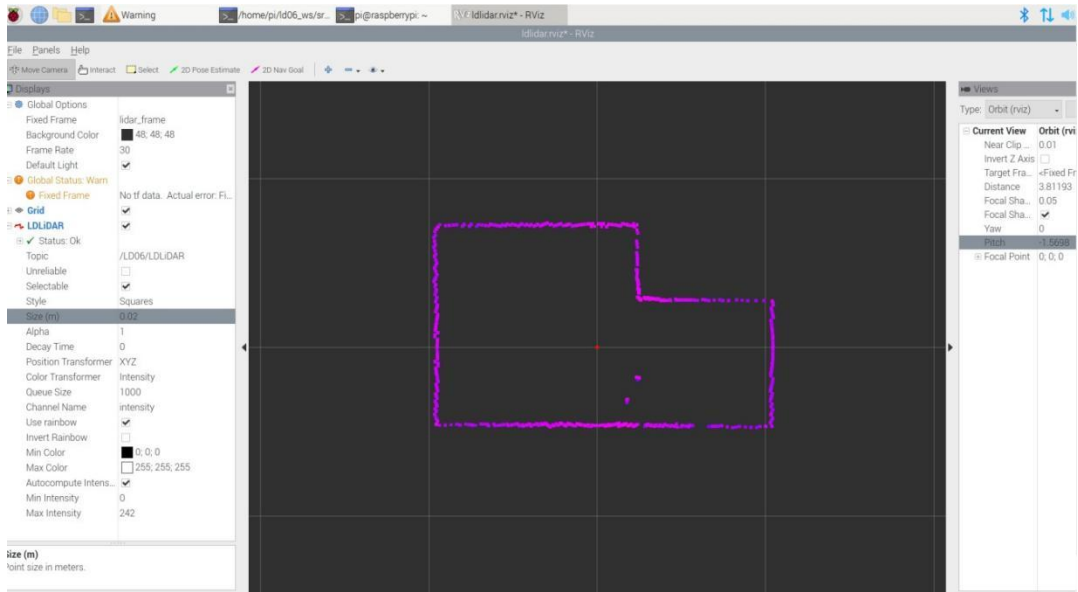


FIG 9 TOFLiDAR\_LD19 RVIZ

## 6. USE CAUTION

***ALARM: Please connect the TOFLiDAR\_LD19 before you power up the raspberry.***

### Temperature

When the working environment temperature of TOFLiDAR\_LD19 is too high or too low, it will affect the accuracy of the distance measuring system. It may also damage the structure of the scanning system and reduce the life of the TOFLiDAR\_LD19. Avoid use in high temperature (>40 degrees Celsius) and low temperature (<0 degrees Celsius) conditions.

### Ambient lighting

The ideal working environment for the Lidar is indoor, indoor lighting (including no light) will not affect it work. Don't using a strong light source (such as a high-power laser) to directly illuminate the lidar's vision system.

If you need to use it outdoors, please avoid that the its vision system is directly facing the sun. This may cause permanent damage to the vision system's sensor chip, thus invalidating the distance measurement.

Please note that the Lidar standard version is subject to interference in outdoor strong sunlight reflection environments.

### Power demand

For development ,both external adaptor or independent power bank works , but need to ensue 5V and 200MA current power input, for external adaptor solution, the Raspberry Pi SBC adaptor is the preference choose.

## 7. REVISION

Date:	Version:	Revision log:
2020-09-15	v2.3	The first stable release is publicly available
2021-12-10	v2.4	fix a little bug
2021-12-17	v2.5	fix "sudo rosdep init" and "rosdep update" bug
2022-01-20	v2.6	fix "assimp" build and install bug, publish stable version
2022-01-14	v2.7	add revision information and change formatting
2022-02-28	v2.8	modify DTOF_LD19 ROS driver compilation steps
2022-04-02	v2.9	Modify company logo and text format